

CHILTERN LANDSCAPES ART EXHIBITION

Inspired by the Chilterns Area of Outstanding Natural Beauty



'Whiteleaf Cross' by Paul Nash, reproduced under license from Whitworth Museum, Manchester

EXHIBITION GUIDE

Work by local artists of the past, present and future

24th April - 1st May '22 (closed 25th & 30th)

11 am - 3:30pm Free entry

Wycombe Museum, Priory Avenue, High Wycombe HP13 6PX



Supported by the
**HS2 Community &
Environment Fund**



Chiltern Landscapes: Art inspired by the Chilterns

'Chilterns Landscapes', organised by Chalk, Cherries and Chairs, showcases the relationship between fine artists and the gently undulating, rich chalk landscapes of the Central Chilterns. The art on display here celebrates both the distinctive wildlife and natural environment in this designated Area of Outstanding Natural Beauty and also the special cultural heritage which has developed here over centuries of our local history.

It is the product of our vibrant local communities, in our towns and villages, including a community of fine artists, past, present and future.

The exhibition forms three parts:

- A selection of **fine art from local and national museums** is reproduced (see how this links to our work on pages 6-11)
- Also on show are the winners of an **art competition organised for children in local schools**, who were invited to produce work inspired by their own impression of places in the region they call home (see how this links to our work on page 12)
- A small sample of work submitted for our consideration by some of the many **contemporary commercial and amateur artists** living and working in the area is displayed, with details on how to purchase prints (see how this links to our work on pages 13-17)

How you can get involved



Throughout the exhibition and this booklet, you will see links to various events and workshops which you are invited to attend, to further enhance your relationship with the Chilterns Landscape.

Chalk, Cherries and Chairs

Chalk, Cherries & Chairs is an ambitious five-year scheme which connects local people and communities of the Central Chilterns to the area's natural environment and cultural heritage. Ours is a precious, ever changing landscape with a fascinating history. Our

18 interweaving projects are designed to promote opportunities for all to explore, protect and celebrate the features of the Chilterns landscape, providing small grants to encourage community initiatives and offering volunteering and learning opportunities across our three themes of nature, people and history.

We aim to develop and secure closer partnership working between communities of interest and local authorities in order to improve local land management, raise community awareness of what makes the Chilterns so special, diversify and increase the number of people receiving the benefits of access to the countryside and provide learning and skills development opportunities for the dedicated volunteers participating in work to restore or conserve our natural environment and record or celebrate our history.

Chalk, Cherries & Chairs is a project of the Chilterns Conservation Board delivered in partnership with Amersham Museum, Berkshire, Buckinghamshire and Oxfordshire Wildlife Trust, Buckinghamshire County Council, Buckinghamshire New University, Chiltern Rangers, Chiltern Society and the National Trust, principally funded by the National Lottery Heritage Fund and the HS2 Community Environment Fund. We are especially grateful to Wycombe Museum for all their assistance with this exhibition.

Learn more about our projects below and become a Chilterns Champion by volunteering with us:

www.chilternsaonb.org/projects/CCC



Workshops/events taking place this week

Tuesday
26th
April



Introduction to Landscape Linocut with Jane Peacock

11am - 1:30pm, Wycombe Museum

Join our artist in residence, Jane Peacock, for a single colour linocut workshop, where you will learn how to carve, ink and press an edition of your own original prints. Book at www.chilternsaonb.org/art

Wednesday
27th
April



Painting demo

11am - 2pm, Wycombe Museum

Local artist Jan Gaska will be demonstrating his painting technique within the grounds, and happy to chat with any visitors. Drop in, no need to book

Thursday
28th
April



Drawing workshop with Jane Peacock

Bookable 1 hour slots between 11-3:30, Wycombe Museum

Join our artist in residence, Jane Peacock, for an hour long workshop creating a landscape inspired by the wonderful grounds of the museum. Book at www.chilternsaonb.org/art

Friday
29th
April



Introduction to landscape painting with Jan Gaska

12-2pm, Wycombe Museum

Join local artist Jan Gaska for this gentle introduction to landscape painting, in the stunning surrounds of the museum. Book at www.chilternsaonb.org/art

Sunday
1st
May



Children's Day

Bookable 1.5 hour slots between 11-3:30, Wycombe Museum

Bring the family for our 'Chilterns Landscapes' Art Exhibition Children's Day with storytelling, scavenger hunt, art and face painting! Book at www.chilternsaonb.org/art

Chilterns Wildlife and Nature



'Lodge Hill' by Anna Dillon

Reproduced by kind permission of the artist www.annadillon.com

Lodge Hill is a Site of Special Scientific Interest to the North of Bledlow Ridge. The site is a chalk grassland and scrub, especially notable for its invertebrates, including butterflies. It is home to a rare snail and local populations of both badgers and slowworms. Volunteers and landowners have worked to clear scrub and replant native species, opening up beautiful views from the Ridgeway National Trail across Saunderton Valley to the windmill at Lacey Green.

Our habitat restoration work on Lodge Hill is undertaken within Landscape Connections, one of our natural environment themed projects, which aims to improve wildlife habitats on a large scale across the Chilterns landscape in conjunction with major landowners. Over the first three years of our scheme, we have planted hedgerows and installed fences as part of this work. Rough Around the Edges, delivered by BBOWT has worked with local community organisations to create or restore habitats at smaller scale sites, and we have also worked with community organisations to improve their small green spaces.

You can join us in this work, for example by signing up for this summer's planned activities at **Whiteleaf Cross** or **Bledlow Ridge**:



'Whiteleaf Cross' by Paul Nash, reproduced under license from Whitworth Museum, Manchester



Whiteleaf Hill Wildlife & Heritage Walk

Wednesday 22nd June

Location: Monk's Risborough

Join us on a guided walk led by the Chiltern Society around two fascinating reserves - Whiteleaf & Brush Hill Nature Reserves - rich in history, wildlife and stunning views.

Book at www.bit.ly/3x9tjau or scan the QR code



'Bledlow Ridge' by Gordon Bradshaw, from the Discover Bucks Museum collections



Chilterns farmers Guided Walk

Monday 20th June

Location: Bledlow Ridge

We have been working with a group of 18 passionate local farmers to establish the Central Chilterns Farmer Cluster over the last 3 years - come along and hear of the great work they have been doing to support our local wildlife in the Chilterns. The walk will focus on the extensive conservation work carried out across local farms and focus on the ambitious chalk grassland restoration project being carried out on Lodge Hill SSSI. The site is one of the best locally for birds, butterflies and chalk specialist plants so bring your binoculars and we will point out what we can see along the way.

Book at www.bit.ly/3ui4bg5 or scan the QR code



Chilterns History and Heritage



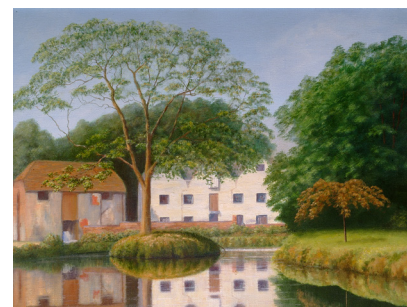
'The Flight of the Five Members' 1642, Oil painting By John Seymour Lucas. (© Parliamentary Art Collection, WOA 2953 heritagecollections.parliament.uk)

The Flight of the Five Members depicts John Hampden, a key figure from the English Civil War, whose family had lived in Great Hampden since the 14th Century. Hampden House, their ancestral home sits atop an even older structure, the scheduled iron age monument of Grim's Ditch.

We have surveyed 16 hectares of land to discover more about Grim's Ditch, some of which is submerged.

Other Heritage themed projects include Celebrating Crafts and Skills of the Chilterns, in which we have organised learning events for lacemaking, straw plaiting and other traditional skills.

You can join us in this work, for example by signing up for this summer's planned activities at *The Rye* or *Scything at Great Missenden*



'Pann Mill' by Peter Hale, courtesy of Wycombe Museum



'Dye in the Wye' Event

Sunday 19th June

Location: The Rye, High Wycombe

Join Chiltern Rangers and Wycombe Museum at our 'Dye in the Wye' event to learn how nature's bounty can create dyes to stain fabrics. Have a go at mixing dyes and inks and unlock links to our shared heritage - Wycombe's river, the river Wye, is the reason many of us are living in the town. Historically, its waters attracted people to the valley and by 1816, more than 30 mills were dotted along the Wye, grinding corn into flour, 'fulling' cloth, making paper, and sawing wood from surrounding woodland. Book at www.bit.ly/3r66SPW or scan the QR code



'The Chilterns' by Agnes E Hope Joseph, courtesy of North Hertfordshire Museum Service



Learn about Scything Workshop

Wednesday 22nd June

Location: Great Missenden

Join our 'Learn about scything' workshop where you will be trained in the theory and practice of scything, one of the traditional agricultural skills of the Chilterns area. Today, scything can maximise the wildlife potential of grassland and meadow management, even on a small scale. Book at www.bit.ly/35NVSz4 or scan the QR code



Chilterns Communities



'Buckinghamshire Farm' by Clive Gardner reproduced by kind permission of Chilterns Conservation Board

Government schemes like Countryside Stewardship and Environmental Land Management have served to illustrate the critical importance of farming communities to the success of nature restoration ambitions. 70% of the land in England is agricultural. In two years from 2019 we have supported owners and managers of 18 farms in the Central Chilterns to help wildlife and nature thrive:

- 23 tonnes of supplementary bird food
- 20,000 new hedge whips
- 1.565 km of coppiced hedgerow
- 3.1 km of pollinator margins created
- 4.4 ha of flower rich meadow created
- 33.5 ha of chalk grassland managed
- 52 owl boxes installed
- 3.44 km of new stock fencing

Land in the Chilterns AONB remains mostly agricultural by area but our communities have become increasingly urbanised over the last few centuries. High Wycombe is now a large regional town with a heritage of furniture making, which harvested resources from the iconic local beechwoods. We celebrate this community in Woodlanders Lives project, in association with Buckinghamshire New University.

You can join us in this work, for example by signing up for this summer's planned activities in **High Wycombe** or **Great Missenden**.



'Burnham Beeches' by Thomas Creswick, from the Discover Bucks Museum collections



Family Bushcraft Day

Saturday 25th June

Location: Near High Wycombe

Chiltern Rangers will lead you through a day in the woods to learn basic fire lighting skills, simple shelter building and cooking your own lunch over the campfire, using skills and techniques which were known to the woodlander communities like the Bodgers.

Book at www.bit.ly/3v4bYgH or scan the QR code



'Park Farm' by Walter John Stamps, courtesy of Wycombe Museum



The importance of soil health in the Chilterns

Thursday 23rd June

Location: Great Missenden

Join farmer Ian Waller, Chair of the Central Chilterns Farmer Cluster on a fascinating guided tour of his farm where he will share his passion for looking after his soil. You will also get chance to meet some of Ian's Herdwick Sheep and some of his many millions of worms!

Book at www.bit.ly/3M5cPon or scan the QR code



Chilterns Landscapes Schools Art Competition

One of the main purposes of the Chalk, Cherries and Chairs project is to inspire the next generation of local children to feel a connection with the special qualities of the central Chilterns landscape. Schools and individual children from in and around the Central Chilterns were invited to showcase their artistic talent by entering a competition celebrating the Chilterns landscapes through art. They were encouraged to make creative pieces linked to the Chilterns. Some schools received support from our Education Consultant, helping them to explore how the Chilterns was special and different in the past, where people lived and worked, and what kind of things people did, and made. We were delighted to receive almost 250 entries, 30 of which have been selected for display as part of this exhibition.



Key Stage 1 Winner
'Bluebells at Hervines Park' by
Spencer, Year 1 - age 5



Lower Key Stage 2 Winner
'Secret pathways' by Pippa, Year 3

Thank you to every school and child who took part!

- Great Missenden C of E Combined School
- Tylers Green Middle School
- Little Chalfont Primary
- Holmer Green First School
- Chestnut Lane
- Frieth CEC School
- Chalfont St Giles Junior School
- Chalfont E-ACT Primary Academy
- Woodside Junior School
- Chartridge Primary School
- Oakridge School
- The Marsh Infants



Upper Key Stage 2 Winner
'View from Oakridge' by Sawera, Year 5

Contemporary Artist Submissions

To celebrate the present, we invited local artists to submit pieces of work inspired by the Chilterns. We received over 40 submissions, many of which you can see in our exhibition. Here you can read how each artwork relates to our vital work in the Central Chilterns.

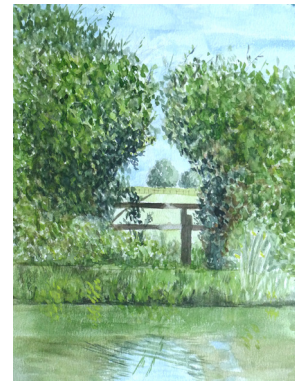


1st Prize

Into the Light

by **Graham Jefford** (www.grahamjefford.co.uk)

This piece beautifully captures the iconic sunken lanes and hedgerows of the Central Chilterns countryside. It shows the sort of connections that we train our young volunteers in as they develop their appreciation for the landscape. 'New Shoots' is our flagship training programme, run for young nature conservation enthusiasts.



2nd Prize

Gap in the Hedge

by **Stuart Lloyd** (www.stuartglloyd.co.uk)

This piece brings to mind the volunteering opportunities with Chiltern Rangers offered in 'Landscape Connections', our largest nature restoration project. Our volunteers have helped plant over 200 new hedge trees in 10km of new coppiced hedgerow across 18 clustered farms, creating wildlife and biodiversity corridors across the land.



3rd Prize

West Wycombe

by **Tony Mealing** (austin124@btinternet.com)

This piece shows an instantly recognisable representation of St Lawrence Church and the Dashwood Mausoleum, where the countryside meets the town. On its slopes, our volunteers are planting grassland species and managing the burial ground. We work with our partners to bring the benefits of environmental volunteering to diverse communities of urban residents.



Red Kite

by Stuart King (www.stuartking.co.uk)

Tracking the Impact offers training for species surveys across 50 1km squares and 18 farm sites across the Central Chilterns, with support from British Trust for Ornithology, Butterfly Conservation, Plantlife and the National Plant Monitoring Scheme.



Chalk Contour

by Jane Peacock (www.janepeacock.art)

Rock Around the Chilterns explores the enduring impact of the principal underlying feature of the Central Chilterns, a tilted chalk outcrop laid down at the bottom of a shallow sub-tropical sea 145 million years ago.



Long Way

by Ali Mackie (www.alimackie-art.com)

Routes to the Past offers LiDAR survey training for volunteers to record the ancient routeways threading their way around the Central Chilterns, with support from Beacons of the Past and Buckinghamshire Council.



Scattered Beech Leaves

by Emma Williams (www.axisweb.org/p/emmajwilliams)

Woodlanders' Lives helps volunteers to research and tell the life stories of bodgers and others in the beechwoods communities of the Central Chilterns, with support from Buckinghamshire New University.



Bullfinch, Buttlers Hangings

by James Ford @Jimfordart

Echoed Locations is a project in which volunteers record the birdsong and other sounds of the Central Chilterns to produce a soundscape and Sonic Postcards, with support from the National Trust.



Hazy Hughenden Park

by Jan Gaska (www.jangaska-art.co.uk)

Water in a Dry Landscape increases our understanding and improves the management of rare and precious riparian habitats around the Central Chilterns chalkstreams like the winterbourne Hughenden Stream and the Horsenden Brook, with support from Chiltern Chalkstreams Project, the River Thames Conservation Trust, the Environment Agency and the Freshwater Habitats Trust.



Forgotten Pathways

by Caroline Friend (www.carofriendart.com)

Grim's Ditch is the largest scheduled monument in the Chilterns AONB area, much of which is now submerged beneath modern farmlands, some of which we are surveying with volunteers organised by Buckinghamshire Archaeology team for a better understanding.



Red Kite and Stock Fencing

by Mahum Ansari

Central Chilterns Farm Cluster is a group of 18 supported farms working together on projects at a larger scale to help wildlife thrive in the Chilterns.



Orchids at Aston Clinton Ragpits

by Elizabeth Debenham (www.photoharvester.co.uk)

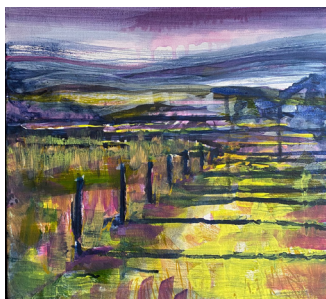
Chalk Grasslands are rich in biodiversity and provide refuges for meadow flowers including rare orchids and the insects which rely on them. In our Landscape Connections project we work to restore some of that which has been lost, bringing new sustainable management arrangements into play, with expert ecologists in partnership with farmers and landowners.



Lodge Hill

by Anna Dillon (www.annadillon.com)

Lodge Hill is a site of special scientific interest where we and our volunteers have worked with farmers, landowners, specialist ecologists, contractors and volunteers to clear the scrub, manage the chalk grassland, install winter food supplies for birdlife and open the spectacular views across the Chilterns from the Ridgeway National Trail.



Lead the way

by Nikki Pearce @nikki_pearce_design

Chilterns Champions is a project in which we celebrate and recognise the value of our volunteers, hundreds of whom contribute many hours of their time and effort to helping us reach our goals.



Naphill onto Bradenham

by Mat Scott @mat_scott_

Woodlands are a defining feature of the Chilterns, one of the most densely wooded areas of England. In our Landscape Connections project we will be working with woodland managers to support them in meeting the challenges of pathogens and invasive species.



Paddling in the Rye

by Tessa Taylor (<https://linktr.ee/tessattaylor>)

People and Mills of the Wye is our project which celebrates the ecology, communities and history of the River Wye, one of the large, rare chalkstreams so special to our corner of the world.



Poppyfield

by Susan Sidley (www.suesidleyart.co.uk)

Planning for the Future is our project to support local communities to engage in community planning processes, with a focus on planning in the designated landscape area of Chilterns AONB, where poppyfields thrive in ploughed fields and other disturbed ground.



Winter Shadows

by Mary Tebje (<https://thechilterns.blog>)

Coming Alive is a project in which we seek to capture all the achievements, lessons and learning from our five years of the Chilterns Conservation Board working together in partnership with Buckinghamshire Council, BBOWT, Bucks New University, Chiltern Rangers, the Chiltern Society, the National Trust, Wycombe and Amersham Museums and many, many others. Like a tree in winter, we intend our legacy website to be an enduring landscape resource with a long future life, housing digital tools and effective techniques ready for others to come back to long after we are gone.

How you can get involved

Chalk, Cherries and Chairs exists to inspire people to learn something new, get involved and take action as Chilterns Champions. Have you been inspired to get involved? Here's how you can!

Chilterns Wildlife summer festival events:

Our summer festival taking place Friday 17 June – Sunday 26 June 2022 is all about Chilterns Wildlife. Book our events here:

- 'Dye in the Wye' family Event - Sunday 19th June - book at www.bit.ly/3r66SPW
- Chilterns farmers Guided Walk - Monday 20th June - book at www.bit.ly/3ui4bg5
- Learn about Scything Workshop - Wednesday 22nd June - book at www.bit.ly/35NVSz4
- Whiteleaf Hill Wildlife & Heritage Walk - Wednesday 22nd June - book at www.bit.ly/3x9tjau
- The importance of soil health, guided farm tour - Thursday 23rd June - book at www.bit.ly/3M5cPon
- Family Bushcraft Day - Saturday 25th June - book at www.bit.ly/3v4bYgH

Become a Chilterns Champion

A Chilterns Champion could be anyone in the Chilterns, who has become an expert in their field, champions local wildlife, gives back to their community or inspires others. There are many ways to be a Chilterns Champion. You could:



Volunteer with one of our projects or our delivery partners (Chiltern Rangers, Bucks New University, Amersham Museum, BBOWT)



Share your expert knowledge with a wider audience, perhaps through an online webinar or leaflet



Champion a green space in your town, or organise a new community garden



Work with young people to offer them new skills and opportunities

If you're interested in gaining new skills, meeting new people and generally having a great time engaging with the landscape and heritage of the Central Chilterns, then visit www.chilternsaonb.org/chilterns-champions to register your interest, and we'll be in touch!

Our Partners



Berkshire
Buckinghamshire
Oxfordshire



Follow us on social media:



@chilterns_ccc

Chilterns CCC

Chilterns CCC

Register for our newsletter

Register for the Chalk, Cherries and Chairs newsletter to be the first to hear about new events and volunteering opportunities, at www.chilternsaonb.org/projects/CCC

Want to get in touch? Email us on ccc@chilternsaonb.org



'Aldbury Nowers' by Elizabeth Debenham

Thank you for visiting Chilterns Landscapes.

We hope you have been inspired to join us in restoring and protecting the natural and cultural landscape of the central Chilterns Area of Outstanding Natural Beauty.



www.chilternsaonb.org/projects/CCC